

DAWSONS

Property Professionals since 1925

18/20 STAMFORD STREET STALYBRIDGE CHESHIRE TEL: 0161 338 2292

Website: www.wcdawson.com Email: reception@wcdawson.com



Huddersfield Road, Stalybridge, SK15 3DW

Dawsons are pleased to present this FOUR bedroom, beautifully designed new build property on Huddersfield Road in Stalybridge. Offering spacious living with a contemporary open plan kitchen/living room, finished to a high standard throughout, this impressive family home combines modern design with practical living space. The property also benefits from fitted Solar Panels. No vendor chain. *Viewing is highly recommended*

Offers In The Region Of £385,000



**CHARTERED SURVEYORS, ESTATE AGENTS
& PROPERTY MANAGEMENT SPECIALISTS**



Huddersfield Road, Stalybridge, SK15 3DW

- New Build Detached Property
- Block Paved Driveway
- Popular And Convenient Location
- Four Bedrooms
- EV Charging Point
- Viewing Highly Recommended
- Contemporary Open Plan Kitchen/Living room
- No vendor Chain

GROUND FLOOR

Entrance Hall

Composite door, LVT flooring, stairs leading to first floor, understairs storage cupboard, doors leading to:

Downstairs WC

3' x 8' (0.91m x 2.44m)

uPVC double glazed window, vanity wash hand basin, low level WC, LVT flooring, heated towel rail.

Lounge

11' x 13' (3.35m x 3.96m)

uPVC double glazed bay window, gas central heating radiator.

Open Plan Kitchen/Living Room

19' x 19' (5.79m x 5.79m)

uPVC double glazed window, fitted a full range of contemporary wall and base units with worksurface over, inset sink and mixer tap, matching breakfast bar, electric hob with extractor unit over, integrated fridge freezer, laundry cupboard with plumbing for automatic

washing machine, LVT flooring, two designer radiators, inset ceiling downlights, three uPVC double glazed Velux skylights, uPVC bi-folding doors leading onto rear patio area

FIRST FLOOR

Landing

uPVC double glazed window, doors leading to:

Bedroom (1)

11' x 12' (3.35m x 3.66m)

uPVC double glazed bay window, gas central heating radiator.

Bedroom (2)

11' x 8' (3.35m x 2.44m)

uPVC double glazed window, gas central heating radiator.

Bedroom (3)

8' x 9' (2.44m x 2.74m)

uPVC double glazed window, gas central heating radiator.

Bedroom (4)

8' x 9' (2.44m x 2.74m)

uPVC double glazed window, gas central heating radiator.

Bathroom

uPVC double glazed window, fitted with a new contemporary suite comprising; low level WC, vanity wash hand basin, LED mirror, bath with rainfall shower and glass shower screen, tiled walls, heated towel rail.

Externally

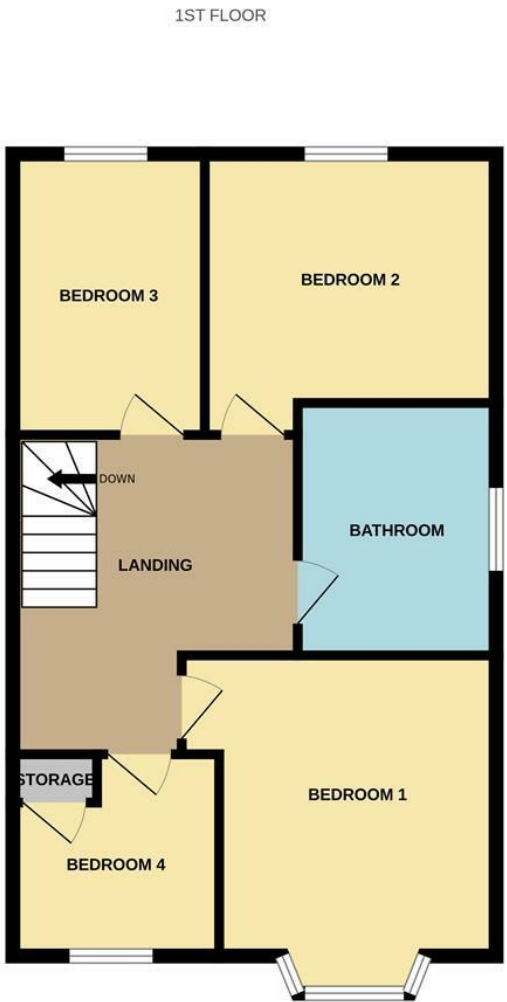
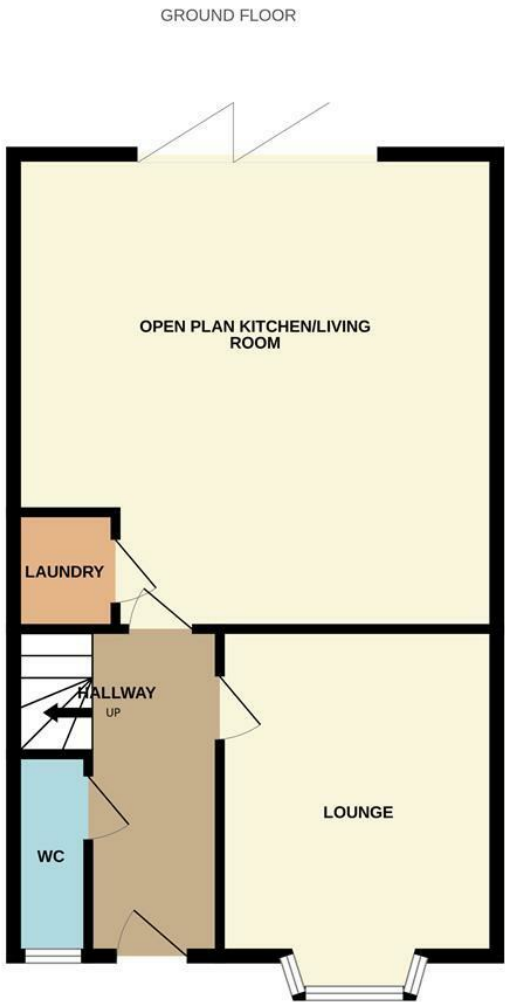
Block paved driveway, fitted EV charger, solar panels, larger than average rear garden.



Directions



Floor Plan



Whilst every attempt has been made to ensure the accuracy of the floorplan contained here, measurements of doors, windows, rooms and any other items are approximate and no responsibility is taken for any error, omission or mis-statement. This plan is for illustrative purposes only and should be used as such by any prospective purchaser. The services, systems and appliances shown have not been tested and no guarantee as to their operability or efficiency can be given.
Made with Metropix ©2025

These particulars, whilst believed to be accurate are set out as a general outline only for guidance and do not constitute any part of an offer or contract. Intending purchasers should not rely on them as statements of representation of fact, but must satisfy themselves by inspection or otherwise as to their accuracy. No person in this firms employment has the authority to make or give any representation or warranty in respect of the property.

